



# GP-UH532 series



Lens is not included in GP-UH532 series

## Main Features

### Complies with medical safety and EMC standards

The Panasonic GP-UH532 series of remote head cameras complies with IEC 60601-1 (basic safety and essential performance of medical electrical equipment) and IEC 60601-1-2 (EMC requirements for medical devices). (pending approval)

<b>User profile function</b> • Six original profiles (on-board) can be used.	<b>12-axis image adjustment function</b>	<b>Foot switch</b>
<b>3MOS sensor</b>	<b>ITU-R BT.2020</b>	<b>Mirror function</b>
<b>Simultaneous 4K output</b>	<b>Electronic shutter</b>	<b>Freeze function</b>
<b>Chemical resistant coating</b>	<b>AE function</b>	<b>50/59.94 Hz supported</b>
	<b>Electronic sensitivity enhancement</b>	<b>Made in Japan</b>

## GP-UH532 Components

3MOS 4K Ultra HD camera head  
**GP-UH532H**



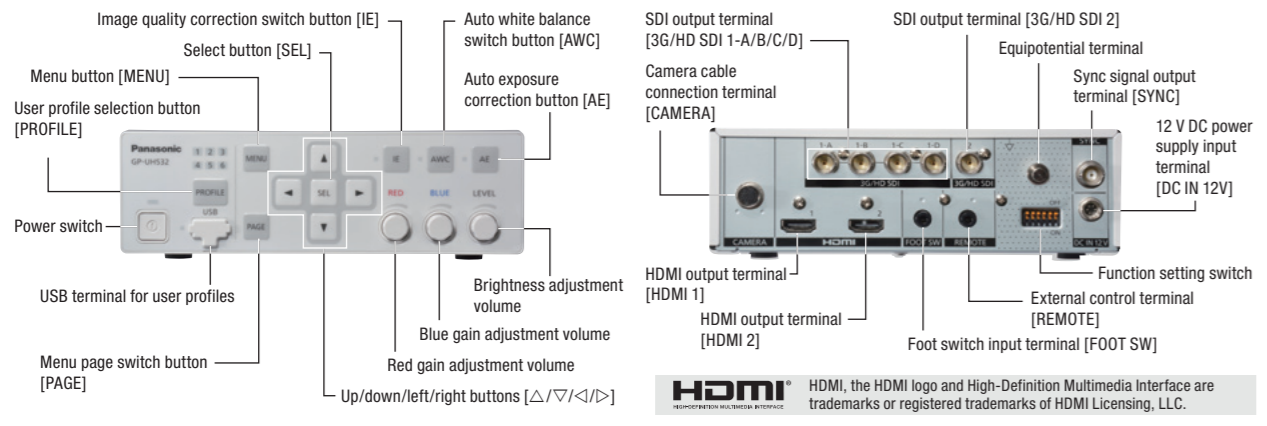
4K Ultra HD camera control unit  
**GP-UH532C**



UHD camera cable  
**GP-UC532G03 (3 m)**  
**GP-UC532G06 (6 m)**



## Names and Functions



## Specifications

<b>Power supply</b>	12 V DC +/- 10%
<b>Power consumption</b>	Approx. 40 W (including camera head)
<b>Optical system</b>	Microprism optical system
<b>Image sensor</b>	1/3" type 3MOS
<b>Video output</b>	
<b>HDMI output</b>	HDMI terminal x 2 (for 4K and 4K/Full HD)
<b>SDI output</b>	BNC terminal x 5 (4 for 4K and 1 for Full HD)
<b>Video format</b>	
<b>HDMI output</b>	3840×2160/59.94p, 3840×2160/50p 1920×1080/59.94p, 1920×1080/59.94i 1920×1080/50p, 1920×1080/50i
<b>SDI output</b>	3840×2160/59.94p, 3840×2160/50p 1920×1080/59.94p, 1920×1080/59.94i 1920×1080/50p, 1920×1080/50i
<b>Standard illumination</b>	2000 lx (3200K, F8)
<b>Minimum illumination</b>	5 lx (F2.2, GAIN: HIGH, 30% output, screen center)
<b>S/N</b>	54 dB (Gain off)
<b>Horizontal resolution</b>	1600 TV lines at center (when 2160p output)
<b>Functions</b>	AE, electronic shutter, gain, digital sensitivity, off gain, output signal switch, user profile, white balance, detail, gamma switch, pedestal, DNR, freeze, flip, mirror, status display, white shading correction
<b>Foot switch</b>	3.5 mm diameter stereo mini jack
<b>External control</b>	3.5 mm diameter stereo mini jack (3-pole serial, RS232C signal compliant)
<b>Operating temperature</b>	0°C to 40°C (32°F to 104°F)
<b>Operating humidity</b>	30% to 90% (without condensation)
<b>Dimensions</b>	
<b>GP-UH532H</b>	27 mm (W) x 30 mm (H) x 42.5 mm (D) (1-1/16 inches (W) x 1-5/32 inches (H) x 1-43/64 inches (D)) (excluding tripod mount base and protrusions)
<b>GP-UH532C</b>	185 mm (W) x 57 mm (H) x 270 mm (D) (7-9/32 inches (W) x 2-1/4 inches (H) x 10-5/8 inches (D)) (excluding rubber feet and protrusions)
<b>Weight</b>	
<b>GP-UH532H</b>	Approx. 65 g (0.14 lbs.)
<b>GP-UH532C</b>	Approx. 2 kg (4.41 lbs.)
<b>Finish</b>	Chemical-resistant coating (sail white)

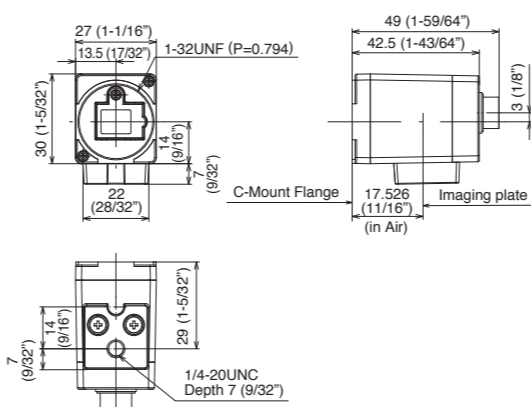
Important  
-Safety Precaution: Carefully read the Important Information, Installation Guide and operating instructions before using this product.  
-This product is intended for usage in general electronics applications.  
Usage of this product for special purposes, such as traffic control instruments, transportation instruments, and medical instruments, may be prohibited without authorization under the applicable laws and regulations of each country or region where this product is in practical use. Arrangement for authorization shall be made under the customer's or user's own responsibility.

DISTRIBUTED BY:

**Industrial & Medical Vision Worldwide Network**  
Medical Vision Group  
Panasonic System Communications Company of North America (PSCNA)  
Division of Panasonic Corporation of North America  
Two Riverfront Plaza, 6th Floor, Newark, NJ 07102-5490, USA  
TEL: +1-201-271-3254 FAX: +1-201-271-3254  
E-mail: jim.roselius@us.panasonic.com  
URL: <http://business.panasonic.com/products-healthcarelifescience-medicalimaging>

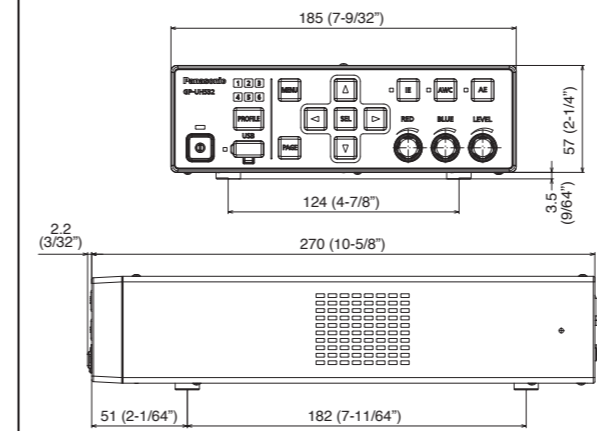
## Appearance

### GP-UH532H



Unit: mm (inches)

### GP-UH532C



Unit: mm (inches)

# Panasonic

## BUSINESS

2016/4

Remote Head Camera  
**GP-UH532 Series**  
3MOS 4K Ultra HD Camera Head  
**GP-UH532H**  
4K Ultra HD Camera Control Unit  
**GP-UH532C**



*Visibility means certainty.*



Lens is not included in GP-UH532 series



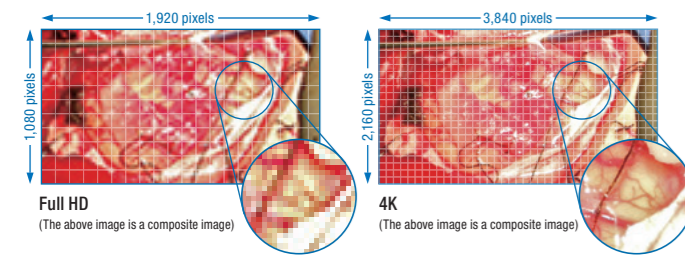
## With Panasonic, visibility means certainty.

The GP-UH532 series is Panasonic's first 4K supported remote head camera. By using our processor that reflects many years of experience and our unique optical design technologies we have achieved clear, ultra high definition imagery. We have achieved a new level of operability in medical environments by adopting a design which provides comfortable operations.

### ▶ High quality, high definition video

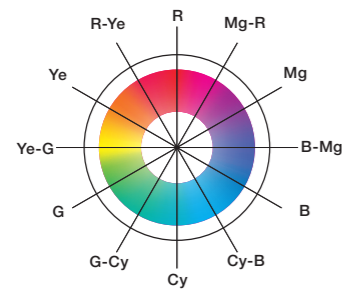
#### Realistic 4K ultra high definition

This product supports 4K resolution (3840 x 2160), which provides four times the resolution of Full HD, and a horizontal resolution of 1600 TV lines. Support for 59.94p/50p also provides smooth images. Our unique technology refined over many years enables amazing ultra high definition and faithful color reproduction.



#### 12-axis image adjustment function

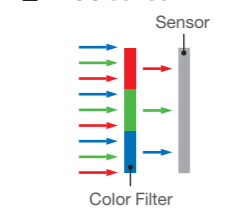
In addition to the six axes for RGB and CyMgYe, intermediate colors can be manually adjusted to perform detailed tuning according to the user and intended application.



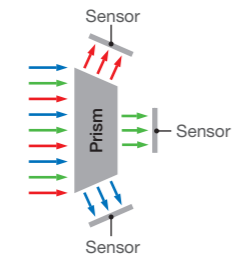
#### Unique Panasonic 3MOS

Our technology enables accurate color separation of the three primary colors of light (Red, Green, and Blue) using the same technology as professional cameras in broadcasting stations. A specialized sensor is used to process each color resulting in excellent color reproduction.

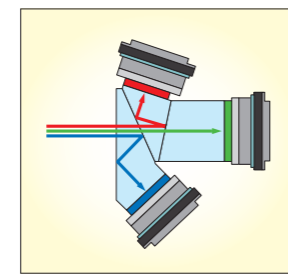
##### ■ 1MOS sensor



##### ■ 3MOS sensor



##### ■ Overview of color analysis



### ▶ High quality

#### Chemical-proof coating

The chassis is treated with a chemical-proof coating to prevent the paint from peeling off when cleaning using chemicals and prevent deterioration to the plastic parts.

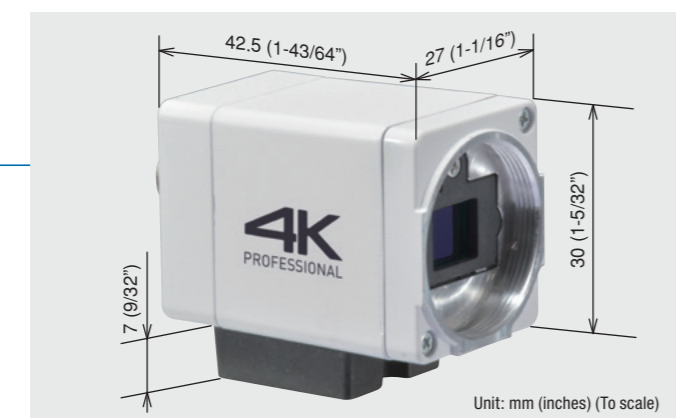
### ▶ Compact

#### Ultra compact and light camera head

The included 1/3" type sensor achieves 4K resolution despite the camera head being the same size as a Full HD model. This enables use in various situations, without having to worry about the head size.

#### Complies with medical safety standards

- IEC60601-1 (3rd Edition) (pending approval)
- IEC60601-1-2 (3rd Edition) (pending approval)



### ▶ Efficient

#### Designed for medical environments

Ease of operation has been achieved through the highly visible layout design and easy to handle button shapes. Rotary volume dials are adopted and can be used in addition to moving the cursor during menu operation to adjust the red, blue, and brightness. In addition, the dials can also be stored to prevent operation mistakes and the flat panel allows for easy cleaning after use.



Rotary volume dials

#### User profile function

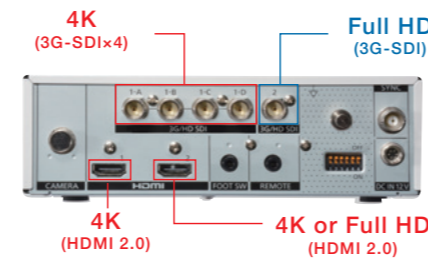
The included user profile function supports six profiles on-board. It is possible to change the user configuration by simply inserting a USB memory drive.



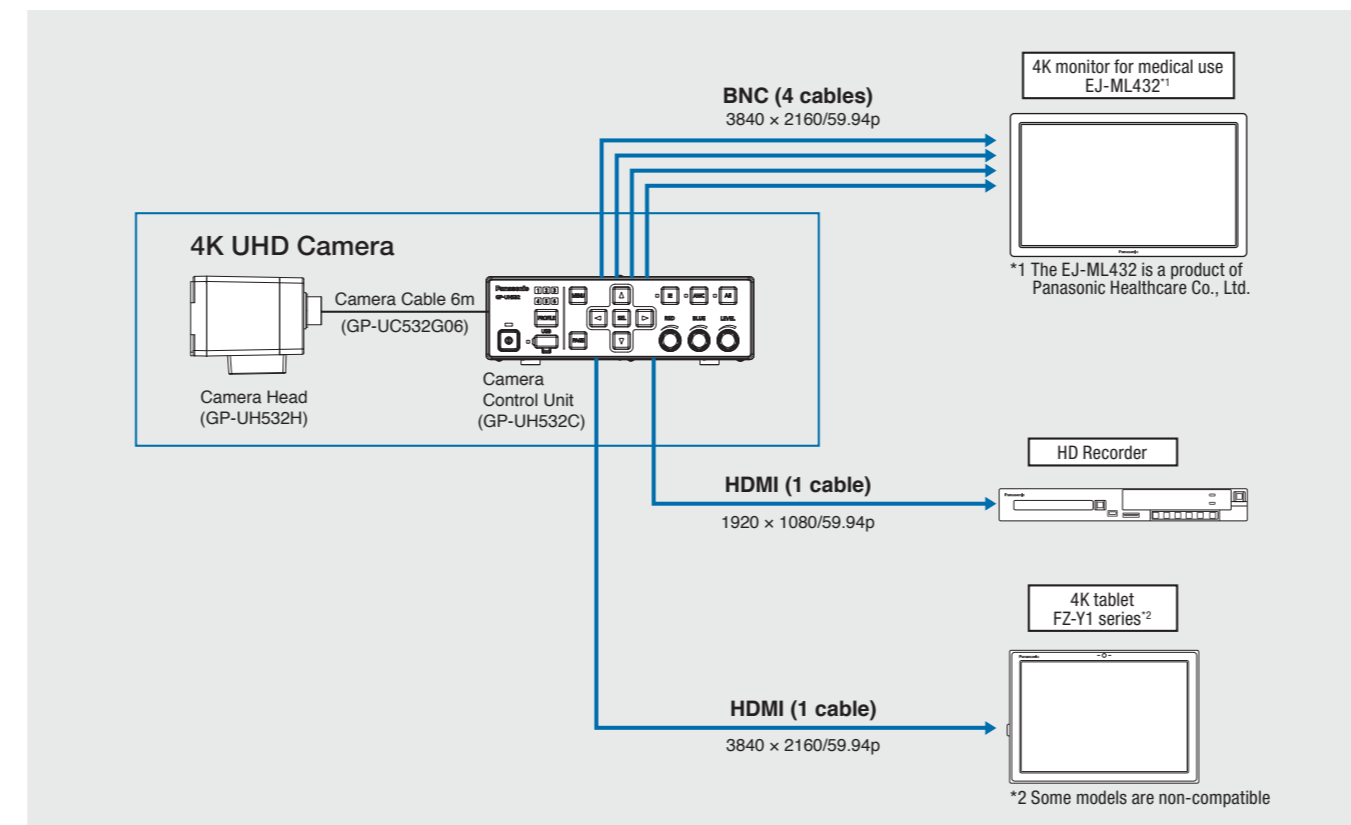
USB terminal for user profiles

#### Simultaneous 4K output

Simultaneous monitoring and recording with high image quality is possible due to the ability to output 4K + 4K simultaneously using HDMI and SDI. In addition to 4K images, Full HD images can be output at the same time for use with Full HD monitors and recorders. Extra devices are not necessary and smooth migration from existing environments is possible.



#### Proposed system



### ▶ Lineup

#### 4K model

## GP-UH532 4K Ultra HD 3MOS camera - boasts four times the resolution of Full HD.



Lens is not included in GP-UH532 series

Image sensor:  
1/3" type 3MOS

Screen resolution:  
3840x2160

Horizontal resolution:  
1600 TV lines at center  
(when 2160p output)

#### Simultaneous output of 4K and Full HD

- Simultaneous output of Full HD also possible
- Simultaneous 4K output possible using a combination of HDMI and SDI

#### Video format

- 3840x2160/59.94p, 3840x2160/50p
- 1920x1080/59.94p, 1920x1080/59.94i
- 1920x1080/50p, 1920x1080/50i

#### ■ Other

- User profile function (six profiles on-board)
- 12-axis image adjustment function
- Foot switch compatible
- Compliance with medical safety and EMC standards (IEC 60601-1 and IEC 60601-1-2) (pending approval)

#### Full HD model

## GP-US932X Excellent high quality color reproduction with a 1/3" type 3MOS Full HD camera.



Lens is not included in GP-UH532 series

Image sensor:  
1/3" type 3MOS

Screen resolution:  
1920x1080

Horizontal resolution:  
1000 TV lines at center  
(when 1080i output)

#### Diverse video output

- Video output: HDMI, SDI x 2, RGB/YPbPr, S-VIDEO, VIDEO
- Sync type: Internal sync and external sync

#### Video format

- 1920x1080/59.94p, 1920x1080/59.94i
- 1920x1080/29.97p(sF)
- 1280x720/59.94p
- 640x480/59.94p, 640x480/59.94i

#### ■ Other

- Standard illumination: 2000 lx (3200K, F12, BINNING: ON)

## GP-KH232A 1/3" type 1MOS Full HD camera - high image quality coupled with high cost performance.



Lens is not included in GP-UH532 series

Image sensor:  
1/3" type Full HD MOS

Screen resolution:  
1920x1080

Horizontal resolution:  
900 TV lines at center  
(when 1080i output)

#### Diverse video output

- Video output: HDMI, RGB/YPbPr, SDI
- Sync type: Internal sync and external sync

#### Video format

- 1920x1080/59.94p, 1920x1080/59.94i
- 1920x1080/29.97p(sF)
- 1280x720/59.94p
- 640x480/59.94p, 640x480/59.94i

#### ■ Other

- Standard illumination: 2000 lx (3200K, F8)