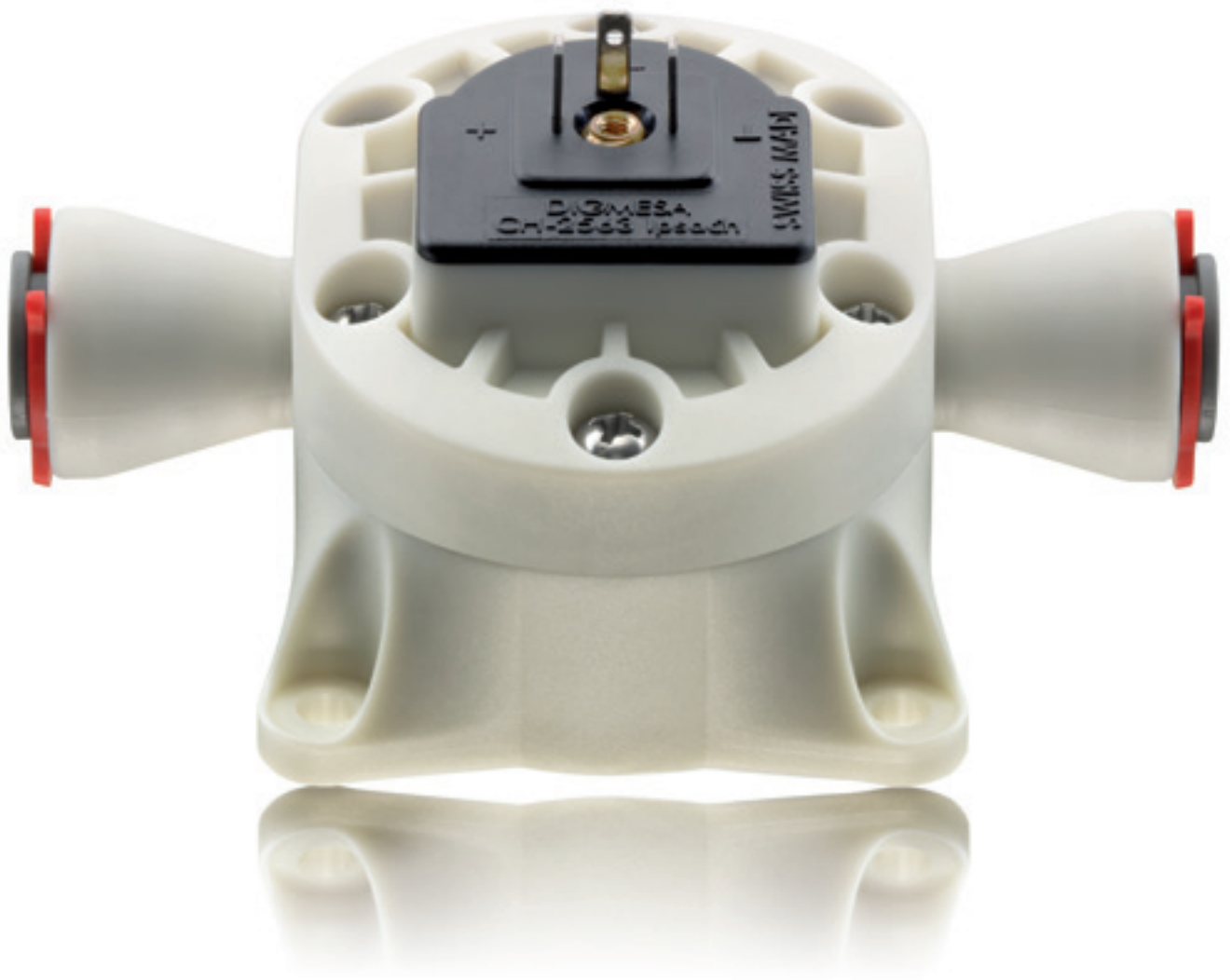




DIGMESA
EPI
- THE
VISCOSITY
LIQUID
FLOW
SENSING
SOLUTION



Flow Sensor EPI Technical Information

This volumetric measuring device is suitable for measuring the flow rate in media with high viscosity, such as syrup, soap, lye, oil, ketchup and honey. The Classicline EPI is also available in PEEK, which features high chemical resistance; possible uses include sterilisation of surgical instruments in hospitals.

Flow Rate l/min

Nozzle	Min	Max
7.0	0.065	5.35

Output Signal

Pulse

Material

PBT (Fiberglass Reinforcement), PEEK

Application examples

Viscous Liquids

Housing Material

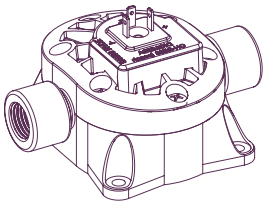
EPI STD

EPI Chemistry

PBT (Fiberglass Reinforcement)

STD

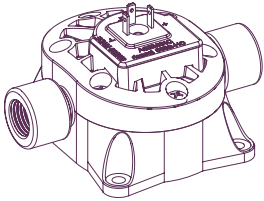
-



PEEK

STD

STD



O-Ring

Viton

STD

STD

EPDM

•

•

Turbine

Turbine PEEK (sealed magnets)

STD

STD



Bearing Pin

Inox

STD

STD

Ceramic

•

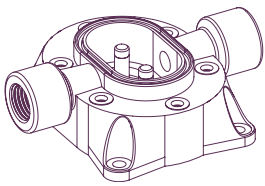
•

Process Connection

G1/4" BSP f/f

STD

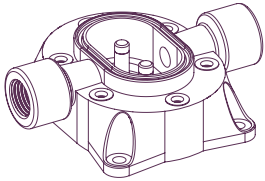
STD



G1/4" NPT f/f (only PEEK)

•

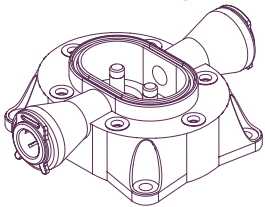
•



John Guest 3/8" f/f (only PBT Fiberglass Reinforcement)

•

–



EI. Connection

EPI STD

EPI Chemistry

3 pin amp unipolar

STD

STD

3 pin amp bipolar

•

•

3 pin amp bipolar PNP

•

•

3 pin amp unipolar LED

•

•

DIGMESA INTERNATIONAL LTD.
BACHSTRASSE 3
6362 STANSSTAD
SWITZERLAND

WWW.DIGMESA.COM
INFO@DIGMESA.COM

All measurements have been taken under ideal laboratory conditions.