



KARUMAN ACE

SMALL VORTEX FLOW SENSOR

Type MLK

High Volume OEM Item

CE mark applicable (available upon request)

General Description

- The most compact design and light weight vortex flow sensor in the field.
- No moving parts and simple structure enable high durability and high precision.
- Low pressure drop design ensure to stable measurement at wide ranges.
- All of wet portion are made of PFA materials and it enable to occur less contamination.



Specifications

Power supply voltage	: 12 to 24V.DC ± 10%
Max. working pressure	: 0.7MPa (at 25°C)
Allowable fluid temperature	: 0 to 90°C
Ambient temperature	: 0 to 50°C
Ambient humidity	: 95%RH or less
External output	: 4 to 20mA
Accuracy	: ±3%FS

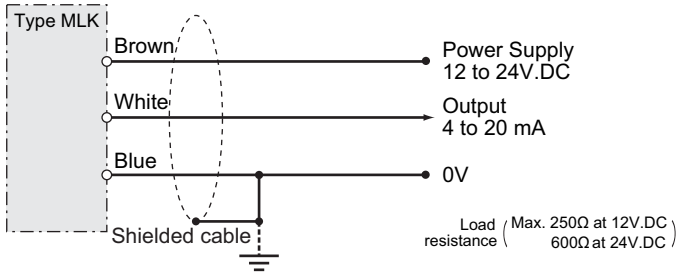
Fluid : Purified water, Chemical liquids and various fluids
(On condition that these fluids do not corrode any materials of main body)

Type Number Selection

Catalog No.						Measurable Flow Range (L/min)	Kinematic Viscosity (mm ² /s)	Connection part details	Wt. (kg)
Type	Prot Size	Main Body Material	Output	Connection Style	O-ring Material				
MLK-	05	3 (PFA)	2 4 to 20mA (3 lead cables without display)	T (Tube)	X (None)	0.4 to 3.5	1	Tube O.D. Φ 9.53mm(3/8) I.D. Φ 6.35mm	0.14
				CS (super type)				*1 Super type Pillar fitting : sleeve(S-W3B),union nut(S-UN-W3B)	0.17
				CP (super-300)				*1 Super-300 type Pillar fitting : sleeve(P-S-W3B),union nut(P-UN-W3B)	0.17

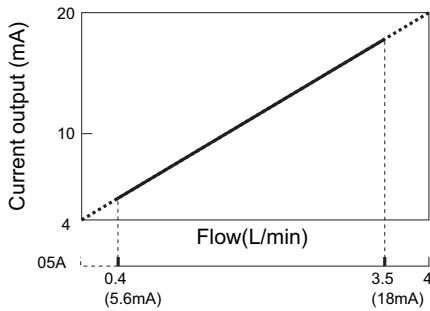
*1 Nippon Pillar Packing co., Ltd.

Wiring Diagram

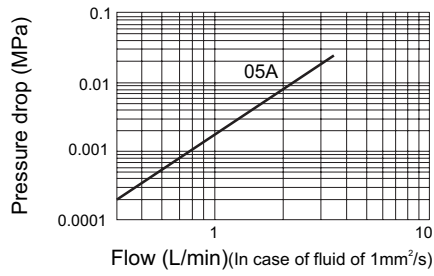


Flow Rate

Flow Characteristic



Pressure Drop

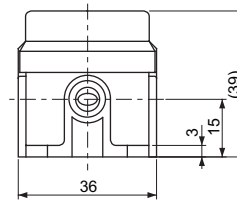
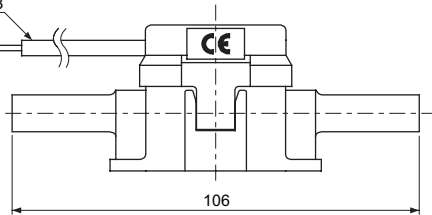


Dimensions

MLK-0532TX

UL20276 insulated shielded cable
Lenght 3000 AWG26×3

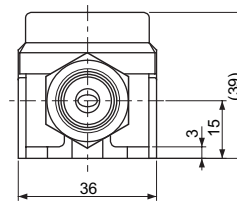
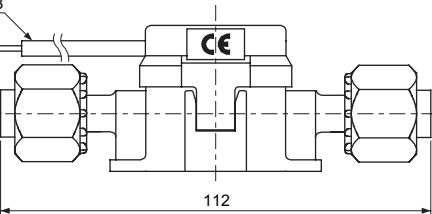
Brown : (+)
White : analog output
Blue : GND



MLK-0532CSX

UL20276 insulated shielded cable
Lenght 3000 AWG26×3

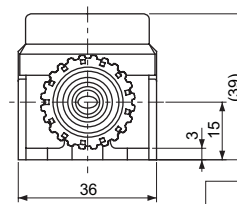
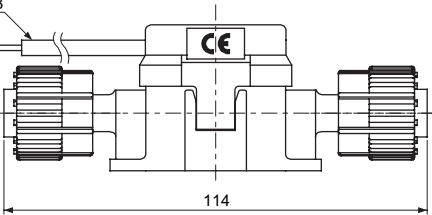
Brown : (+)
White : analog output
Blue : GND



MLK-0532CPX

UL20276 insulated shielded cable
Lenght 3000 AWG26×3

Brown : (+)
White : analog output
Blue : GND



unit(mm)

NOTES FOR SAFETY

Failure to read and follow all instruction carefully before installing or operating the product could cause personal injury and/or property damage.

Specifications are subject to change without notice.