



➤ **AG-7000**
Monochrome ICCD



- *2/3" interline transfer CCD*
- *18 mm Gen III Ultra intensifier*
- *768 x 493 resolution (EIA)*
- *Full auto-gating and exposure control*
- *Easy connectivity to monitors via standard RS-170 analog video output*
- *Integrated 3-axis lens controller for use with motorized lenses*
- *Compact size: 51 x 45 x 87 mm*
- *Lower power — 2.2 W typical*

Specifications for AG-7000

Internal CCD Camera Specifications

Sensor	2/3" interlaced scan IT CCD ICX422ALL
Active pixels	768 (H) x 493 (V)
Cell size	11.6 μm x 13.5 μm
Scanning	525 lines / 60 Hz 2:1 interlace
Synchronization	Internal/external auto switch HD/VD 4.0 Vp-p impedance 10k VD=interlace/non-interlace HD=15.734kHz ±5%
TV resolution	570 (H) x 350 (V)
S/N ratio	50 dB min. (AGC Off), 56 dB typical
Video output	1.0 Vp-p composite video, 75 Ω
AGC	Selectable ON/OFF (RS-232 controlled)
Gamma	0.45/1.0 switchable

Auto-Gated Intensified CCD Series Specifications

Min. gating time	100 ns
Gain Control	MCP (RS-232 controlled)
Min. Sensitivity	1 x 10 ⁻⁷ lux at face plate
Min. Illumination	1 x 10 ⁻⁶ lux f=1.4
Lens Mount	C-mount standard, 1" format lenses recommended
Power Requirement	12V DC ± 10%, 160 mA (typical t 23 °C)
Size (H x W x L)	51mm x 45mm x 87mm (2" x 1.75" x 3.42")
Weight	309.8 grams (without tripod mount)
Operating Temp.	-10° C to +50° C
Storage Temp.	-50° C to +70° C
Vibration	7 Grms (20 Hz to 2000 Hz) Random
Shock	70 G, 11 ms, half-sine

Intensifier Tube Specifications

Type	18 mm gated, proximity focus
Input	1" (18 mm diameter)
Output	2/3" (tapered, fiber-coupled to CCD)
Photocathode	GaAs
Phosphor Screen	P43
Gain	30,000 - 50,000
Resolution	64 lp/mm
EBI	2.5 x 10 ⁻¹¹ lm/cm ² (max)
Tube Life	10,000 hrs

Ordering Information

ITAR Controlled Export/Import License Required

Camera	
Lead Processing	AG-7000
Optional Accessories (MUST BE ORDERED SEPARATELY)	
Power Cable	6P-02S
Power Supply	PD-12UU6PF-AG
Tripod Kit	20006511
Optional Configurations	
Extended Temperature (-40° C to +65° C)	OP22-5-1 (reduced performance may occur)
Conformal Coat	OP-22-5-5

ITAR - ICCD products and technical information are regulated by the Arms Export Control Act (Title 22, U.S.C. SEC 2751 et seq.) and/or the Export Administration Act of 1979, as amended, Title 50, U.S.C., App 2401 et seq. Export approval is required prior to taking or shipping ICCD products internationally.

Europe, Middle East & Africa
Phone +45 4457 8888
Fax +45 4491 3252

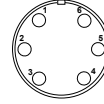
Asia Pacific
Phone +81 45 440 0154
Fax +81 45 440 0166

Americas
Phone (Toll-Free) 1 800 445 5444
Phone +1 408 383 0300

Connector Pin-outs

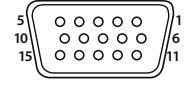
6-Pin Connector

PIN#	FUNCTION
1	+12V GND
2	+12V PWR
3	GND
4	AUTO-IRIS
5	GND
6	IRIS PWR (+12V)

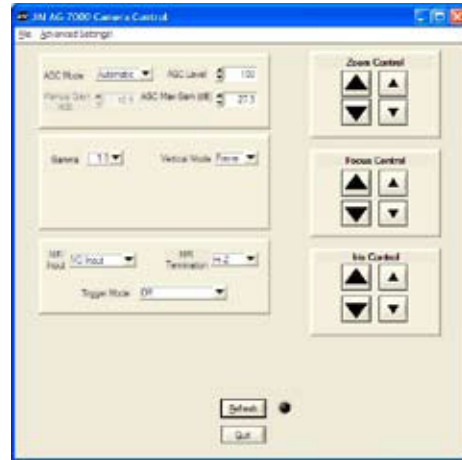


15-Pin Connector

1	RX In	9	Zoom Out
2	Video Out	10	GND
3	TX Out	11	Iris Out
4	Focus Out	12	INTG
5	GND	13	Ext HD
6	GND	14	EXT VD
7	GND	15	NC
8	GND		

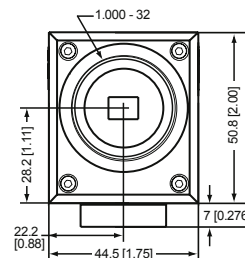


ICCD GUI

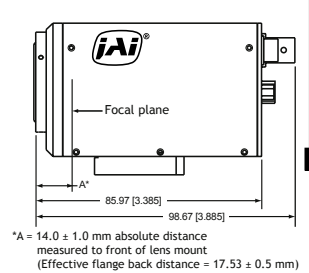


Dimensions

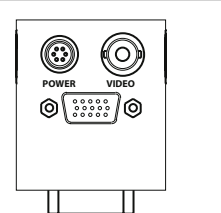
Front view



Side view



Rear view



Bottom view

