

azbil

ULTRASONIC FLOW METER

LUF Series

Acid/alkali-resistant PFA material used for wetted parts qualifies the meter as best fit for measuring such corrosive solution!



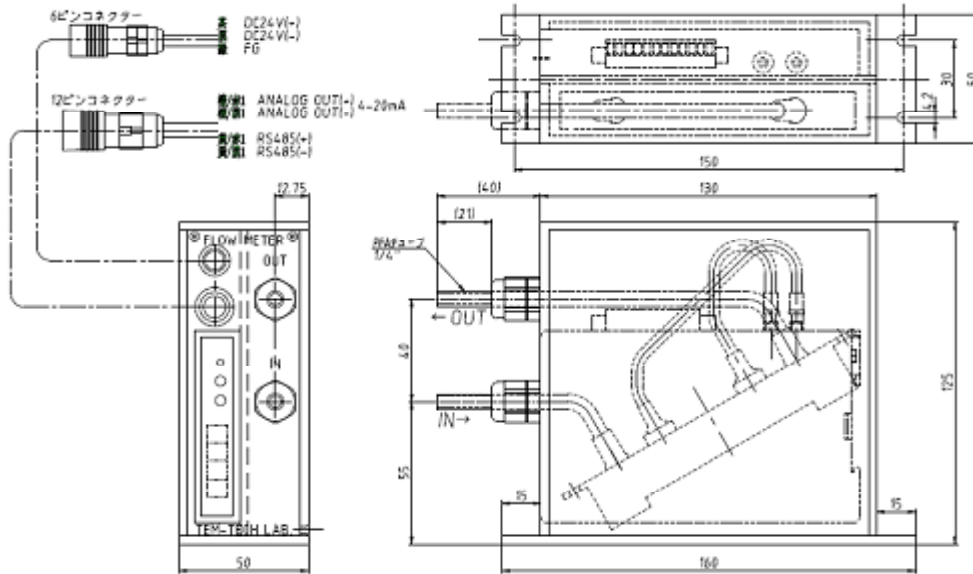
- Built-in converter (ultrasonic to electric signals)
- Sensor detects even a micro-flow rate such as 10ml/min
- Measuring high temperature fluid up to 150 (Option)
- Built-in computer corrects measuring errors caused by bubbles in the fluid
- Built-in pressure sensor (Option)
- Analog output covers 4-20mA, 1-5V and 0-10V
- Fitting compatible with tube, flared or super 300
- CE conformity & RoHS compliant

Tem-Tech Lab

Ultrasonic Flow Meter "LUF series"

20122

Configuration



Specifications

Application	Measuring flow for semiconductor wet manufacturing
Rated Flow Rate	Fitting size (dia.) 1/4" : 0 ~ 100, 0 ~ 500, 0 ~ 1000, 0 ~ 3000 ml/min. Fitting size (dia.) 3/8" : 0 ~ 5000, 0 ~ 8000 ml/min.
Allowable Flow Pressure	0.5 MPa
Accuracy	±1% F.S. (under 20 with water)
Detective Method	Ceramic Piezoelectric ultrasonic
Wetted Part Material	PFA
Operation Temperature	10 to 60 (Option : 10 to 150)
Measuring Part Temperature	0 to 50
Power Supply	DC24V
Output Mode	Digital Monitor Display
Output	4-20mA, 1-5V, 0-10V, RS485
Warning Output	DC200V(max.) 120mA(max.) Open collector
Electric Consumption	200mA(max.)
Fitting Type	Pipe, Flared, Pillar (Super300)
Option	Built-in Pressure Sensor

Model Configuration

Model :	LUF	-	-	-
Flow Rate	0 to 100ml/min.	01		
	0 to 500ml/min.	05		
	0 to 1,000ml/min.	10		
	0 to 3,000ml/min.	30		
	0 to 5,000ml/min.	50		
	0 to 8,000ml/min.	80		
Fitting Type	Tube	P		
	Flared	F		
	Pillar (Super 300)	S		
Fitting Size (dia.)	1/4"	1		
	3/8"	2		
OUT PUT	4 - 20 mA		420	
	1 - 5V		105	
	0 - 10V		010	
	RS485		485	

*Subject to change without notice

Contact : hello@tem-tech.co.jp