

PULSE OUTPUT TYPE VORTEX FLOW METER **KARUMAN ACE**

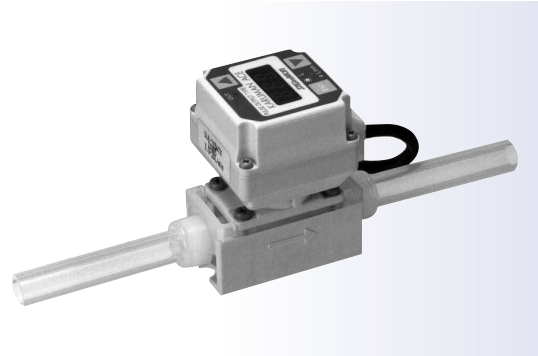
Type **SLK**

- Karman vortex fluid flow meter of wetted part PFA.
- Highly durable and highly precise Karman vortex flow meter having a simple structure free of movable parts.
- Provide with LED display + pulse output + open collector output.

CE mark applicable (available upon request)

COMMON SPECIFICATIONS

Power supply voltage : 12 to 24V. DC
Current consumption : Lower than 100mA
Allowable working fluid temperature : 0 to 90°C
Working ambient temperature : 0 to 50°C
Working ambient humidity : Lower than 95%RH
Accuracy : $\pm 3\%$ RD (Type SLK-0534: $\pm 2\%$ FS)
Responsibility : Approx. 0.2 sec. (Switch output is approx. 1 sec.)
Applicable fluids : Pure water, chemical liquids and other various fluids (On condition that these liquids do not corrode any material of main body)

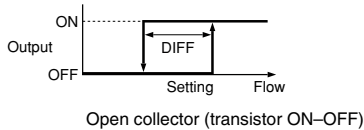


SPECIFICATIONS

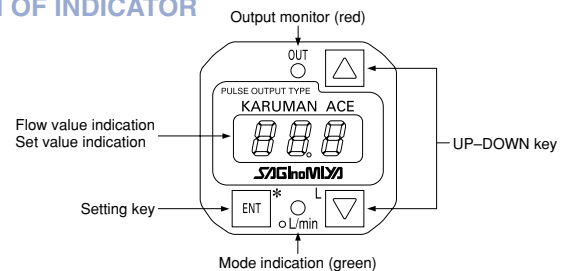
Catalog No.						Measurable Flow Range (L/min)	Pulse Rate (mL/pulse)	Kinematic Viscosity (mm ² /s)	Max. Operating Pressure (MPa)	Wt. (kg)
Type	Connection Size	Main Body Material	Output	Connection Style	Packing Material					
SLK-	05	3 (PFA)	4 NPN open collector pulse Pulse width: 0.1ms and NPN open collector output, w/display	A (Finallock)	X (None)	0.5 to 3.5	0.1	1	1	0.22
	08					1 to 10	1	1.2 or less		
	10					2.5 (2) to 20	10	1.5 or less		
	15					4 (3) to 40	10	2.5 or less		
	20					10 (8) to 90	10	4 or less		
	05					0.5 to 3.5	0.1	1		
	08			1 to 10	1	1.2 or less				
	10			2.5 (2) to 20	10	1.5 or less				
	15			4 (3) to 40	10	2.5 or less				
	20			10 (8) to 90	10	4 or less				
	20			10 (8) to 90	10	4 or less	0.5	0.38		

- Numeric values in () in the measuring flow range show those of water (1mm²/s at 25°C). 05 type is guaranteed only when kinematic viscosity of fluids is 1mm²/s.
- Finallock joint is manufactured by Kurashiki Boseki Co., and nuts and phenol are attached to it.
- Pulse width 0.1ms or over.

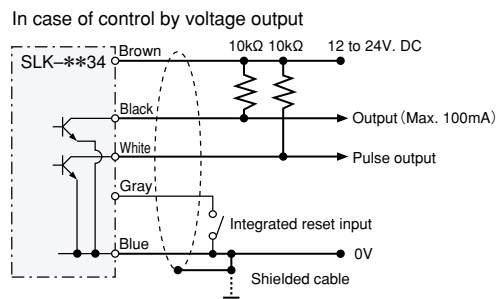
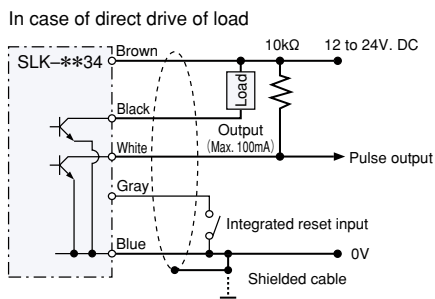
OPERATION



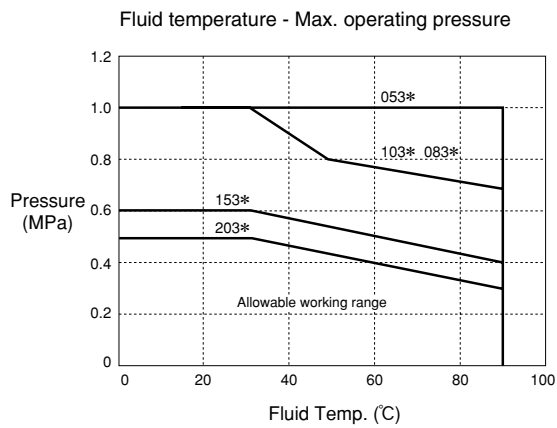
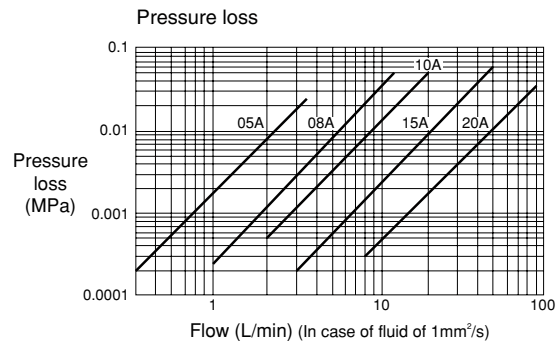
DESCRIPTION OF INDICATOR



WIRING DIAGRAM

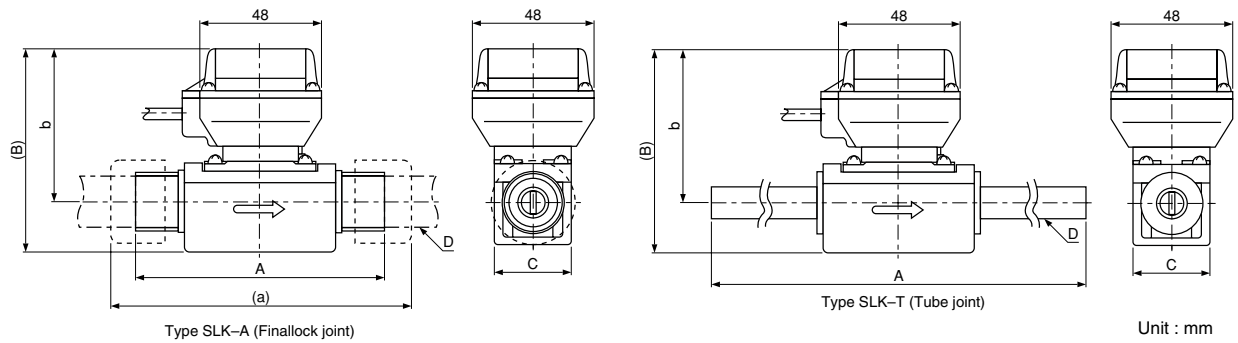


FLOW RATE



Since the main body is made of resin, the max. operating pressure changes according to the liquid temperature. Use the unit within the allowable working range shown in the left figure.

DIMENSIONS



Catalog No.	Finallock joint					Tube joint				
	SLK-									
Size (mm)	0534AX	0834AX	1034AX	1534AX	2034AX	0534TX	0834TX	1034TX	1534TX	2034TX
A	85	100		130		230			280	300
a	105	120		121	156	-	-		-	-
b	57	59		61	70	57	59		61	70
B	72	76		79	93	68	76		79	93
C	30	30		30	40	30	30		30	40
D	3/8	1/2		3/4	1	3/8	1/2		3/4	1